

KVBID

Primary Gateways and Secondary Gateway Revisions

October 20, 2010



prepared by:

Selbert Perkins Design Collaborative

432 Culver Blvd.

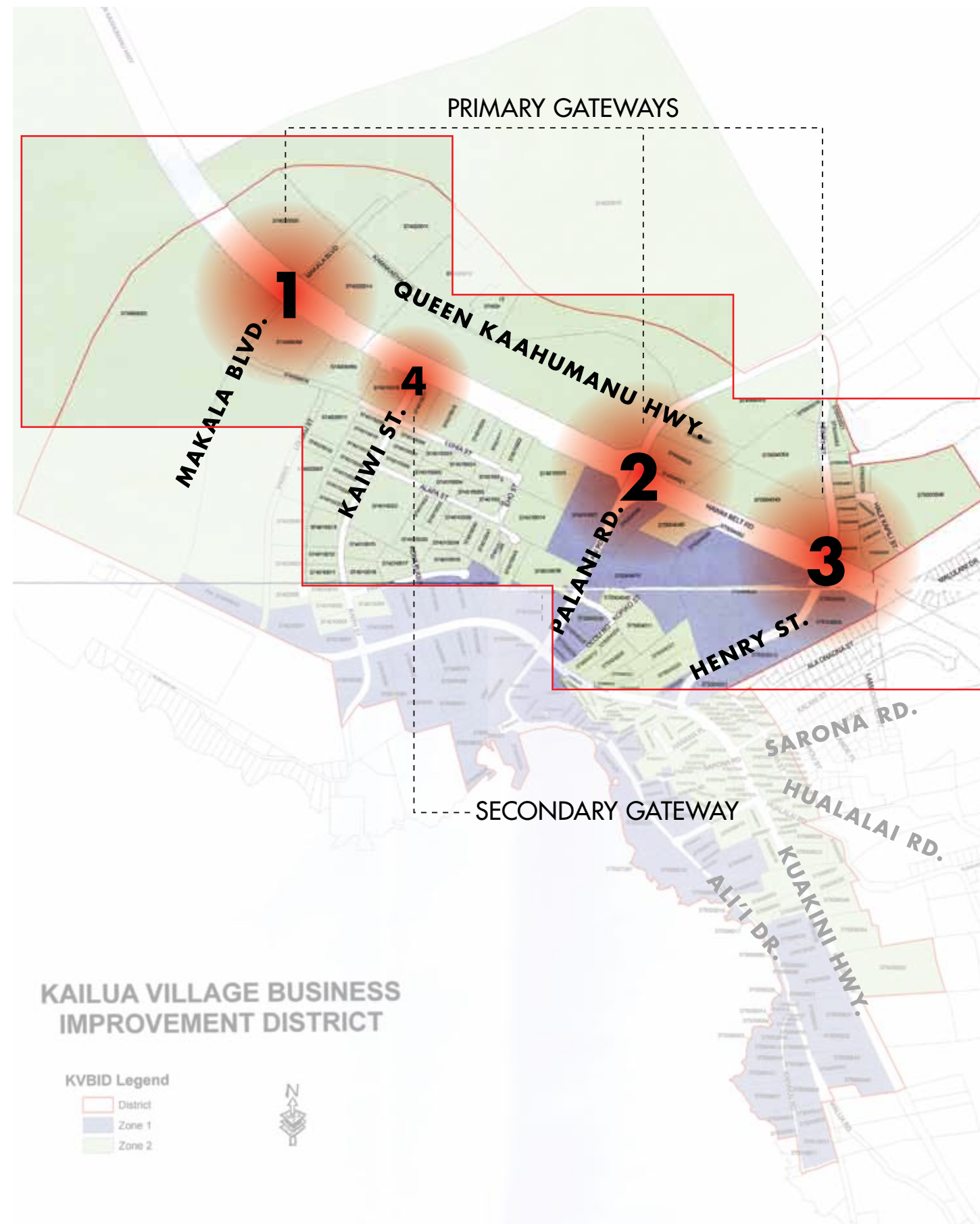
Playa del Rey, CA 90293

T 310.822.5223

F 310.822.5203

W www.selbertperkins.com

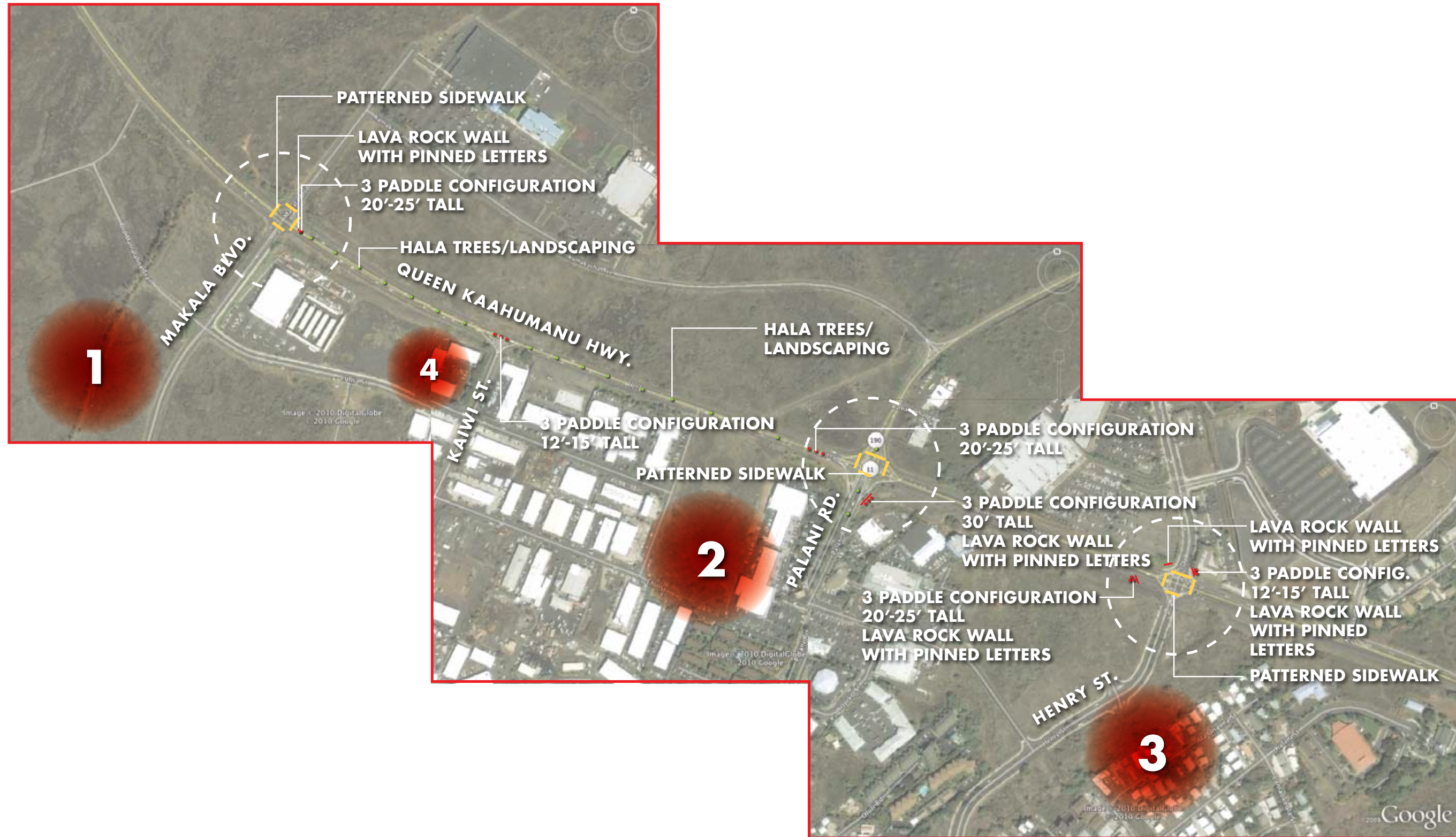
Gateways: Primary Gateway Diagram



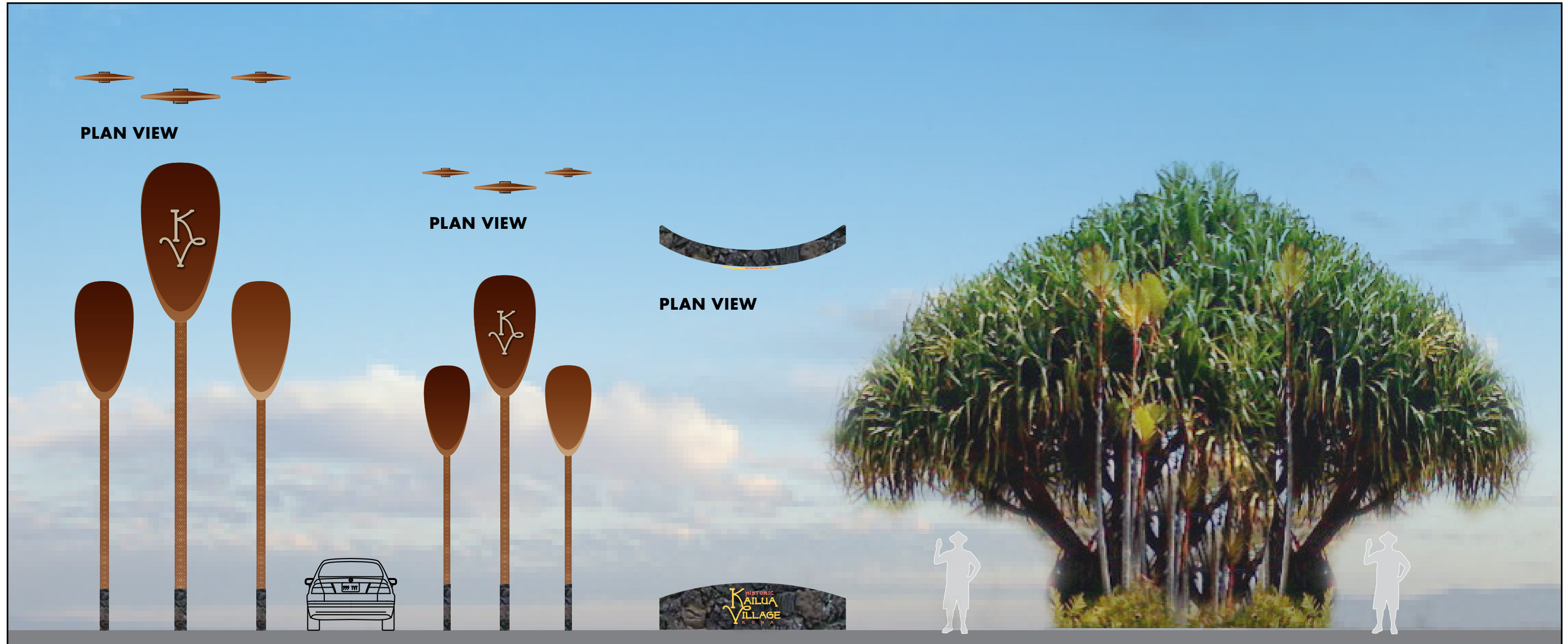
Gateways: Primary Gateway Circulation Plan



Gateways: Primary Gateway Sign Location Plan



Gateways: Primary Gateway Elements



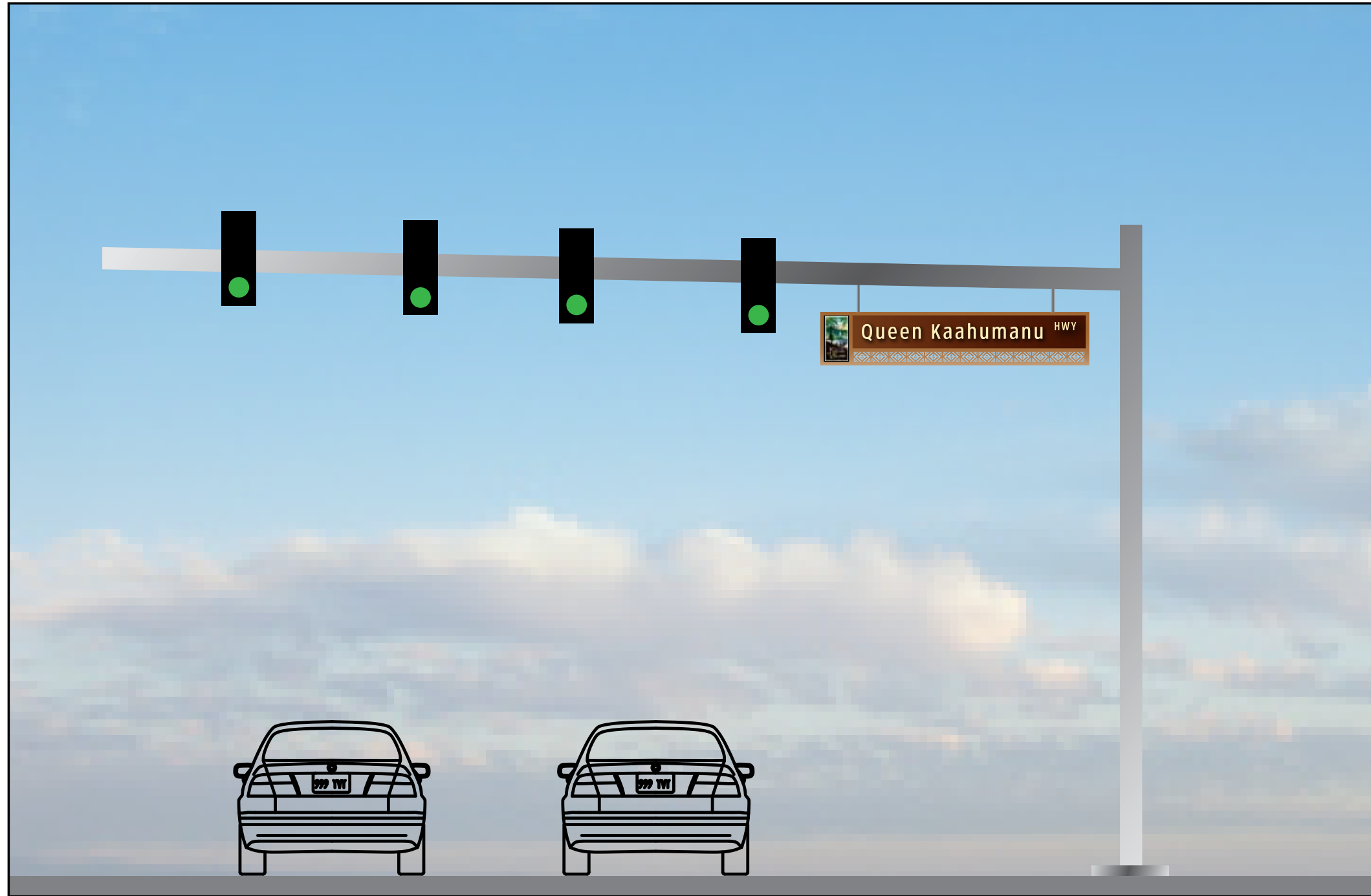
LARGE PADDLES
Primary Gateway Elements

SMALL PADDLES

LAVA ROCK WALL
WITH PINNED LETTERS

HALA TREES, LANDSCAPING, AND
GROUND COVER

Gateways: Primary Gateway Elements



STREET IDENTITY SIGN

Primary Gateway Elements



OPTION 1



OPTION 2

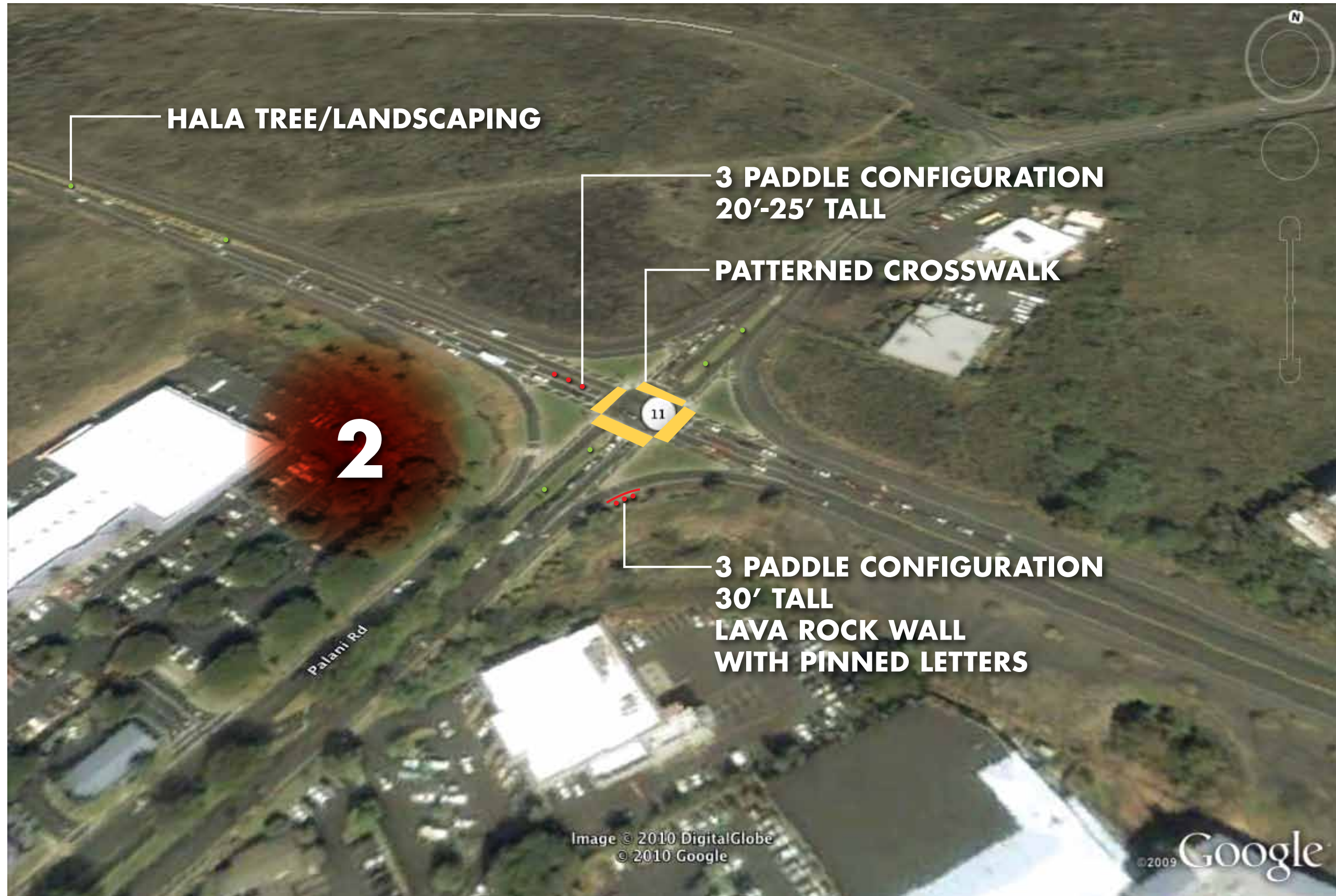
Gateways: Location 1 – Intersection of Queen Kaahumanu Hwy. and Makala Blvd.



Gateways: Rendering – Intersection of Queen Kaahumanu Hwy. and Makala Blvd.



Gateways: Location 2 – Intersection of Queen Kaahumanu Hwy. and Palani Rd.



Gateways: Location 2 – Intersection of Queen Kaahumanu Hwy. and Palani Rd.



Gateways: Location 2 – Intersection of Queen Kaahumanu Hwy. and Palani Rd.



BEFORE



AFTER

Gateways: Location 2 – Intersection of Queen Kaahumanu Hwy. and Palani Rd.



BEFORE



AFTER

Gateways: Location 3 – Intersection of Queen Kaahumanu Hwy. and Henry St.



Gateways: Location 3 – Intersection of Queen Kaahumanu Hwy. and Henry St.



Gateways: Location 3 – Intersection of Queen Kaahumanu Hwy. and Henry St.



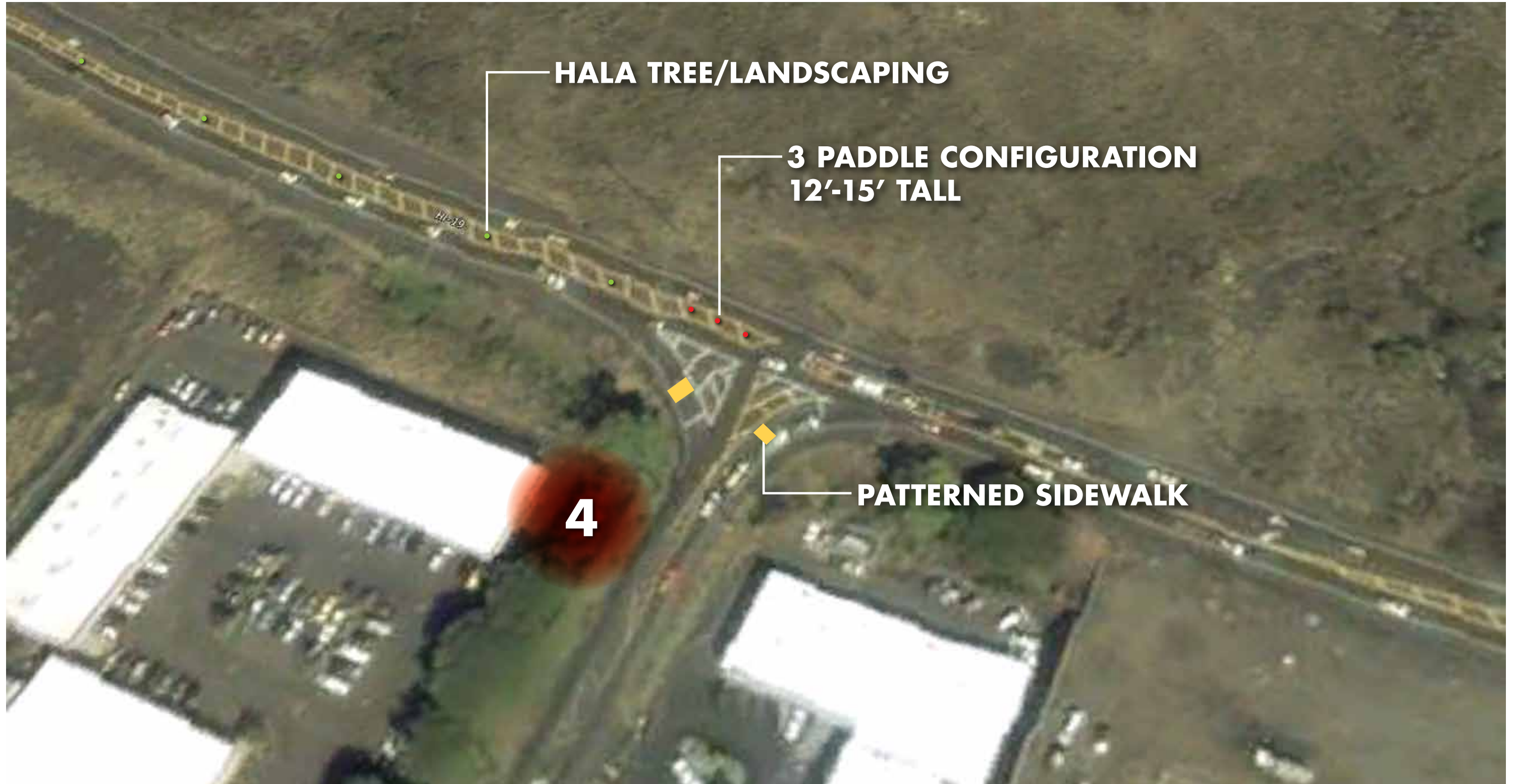
Gateways: Location 3 – Intersection of Queen Kaahumanu Hwy. and Henry St.



Gateways: Location 3 – Intersection of Queen Kaahumanu Hwy. and Henry St.



Gateways: Location 4 – Intersection of Queen Kaahumanu Hwy. and Kaiwi St.



Gateways: Location 4 – Intersection of Queen Kaahumanu Hwy. and Kaiwi St.

